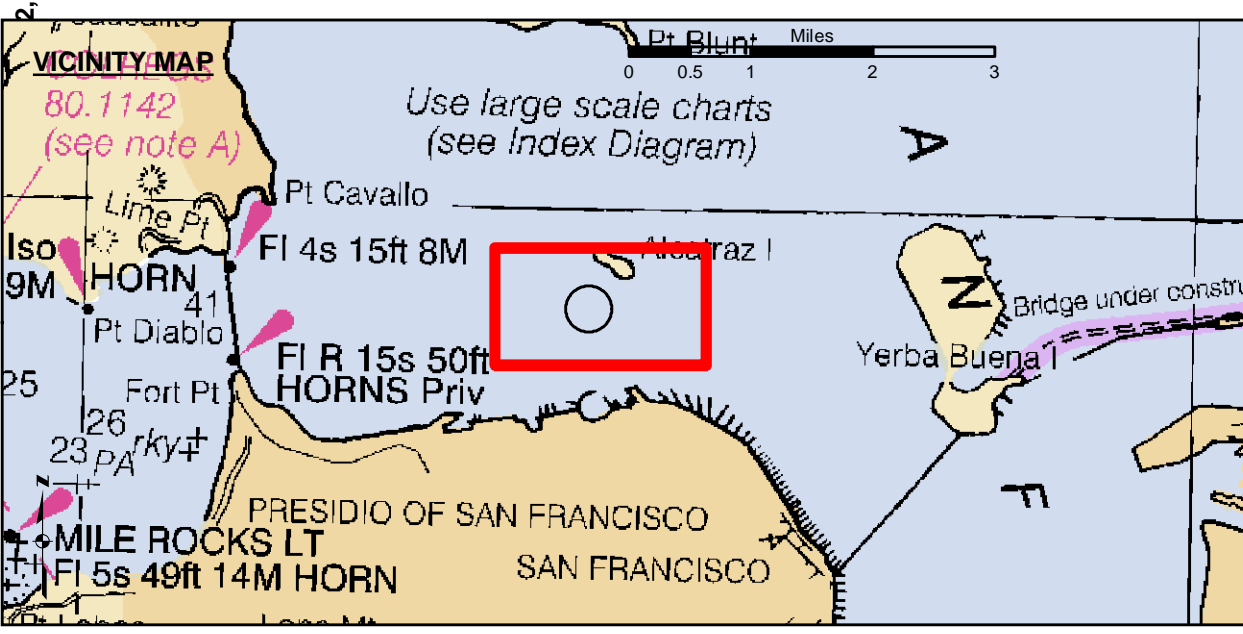
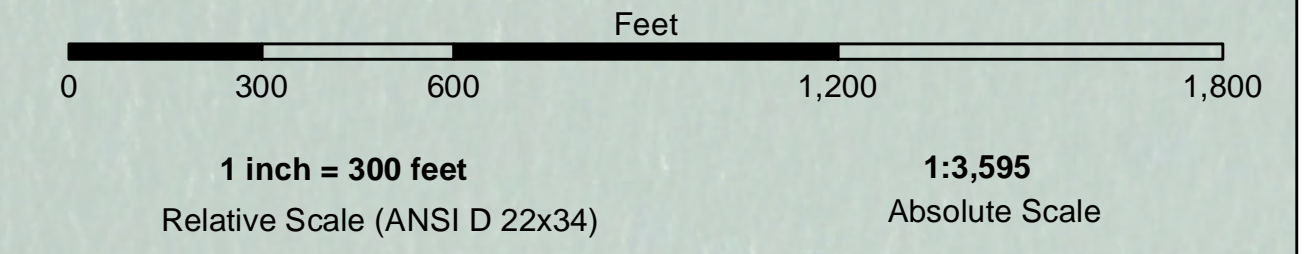


**LAMBERT COORDINATES**

POINT	X	Y
U.S.G.S. MON: 57	ELEV. - 14.00	6,005,367
TRANSAMERICA BUILDING	6,011,912	2,117,586
ALCATRAZ DISPOSAL SITE - (SF-11)		
1,000 FT. RADIUS	6,005,935	2,127,235
ALCATRAZ LIGHT	6,008,552	2,129,010
ALCATRAZ BUOY	6,008,367	2,127,186



- Federal Navigation Channel
- Shoaling Area
- Placement Area
- Anchorage Area
- Wreck Area
- Submerged Wreck
- Zone III Angle Points
- Beacon, General
- Obstruction Point
- Navigation Buoy
- Navigation Buoy
- Shoalest Sounding\*
- Contour Lines
- Every 10' -20' to -120'

**NOTES:**  
 HORIZONTAL COORDINATE SYSTEM:  
 NORTH AMERICAN DATUM OF 1983 (NAD83). PROJECTED TO THE STATE PLANE COORDINATE SYSTEM (SPCS), CALIFORNIA ZONE III. DISTANCE UNITS IN U.S. SURVEY FEET.  
 VERTICAL DATUM:  
 SOUNDINGS ARE SHOWN IN FEET AND INDICATE DEPTHS BELOW MEAN LOWER LOW WATER.  
 THE INFORMATION DEPICTED ON THIS MAP REPRESENTS THE RESULTS OF A SURVEY CONDUCTED ON THE DATE INDICATED AND CAN ONLY BE CONSIDERED TO REPRESENT THE GENERAL CONDITION EXISTING AT THAT TIME.  
 BASE MAPS ARE USDA NAIP 2010.  
 \*SHOALEST SOUNDING PER QUARTER PER REACH

DRAWING NOT TO BE USED FOR NAVIGATION. ONLY CHANNEL CONDITION AT DATE OF SURVEY.  
 THE LOCATION OF ALL NAVIGATION AIDS ARE BASED ON INFORMATION PROVIDED BY THE U.S. COAST GUARD. BUOY LOCATIONS REPRESENT THE POSITION OF THE SINKER ONLY.  
 SOUNDINGS WERE TAKEN BY FATHOMETER AND ARE SHOWN TO THE NEAREST TENTH OF A FOOT. SOUNDINGS ARE BASED ON THE DATUM OF MEAN LOWER LOW WATER AT THE LOCALITY.  
 SURVEYED BY THE CORPS OF ENGINEERS.  
 THE PROJECT DEPTH IS -40 FEET AT MLLW.  
 PLANE GRID AND COORDINATES ARE BASED ON LAMBERT PROJECTION, NAD 83, ZONE III CALIFORNIA AS DESCRIBED IN SPECIAL PUBLICATION NO. 235, PUBLISHED BY THE NATIONAL OCEAN SURVEY.  
 HORIZONTAL GPS CONTROL:  
 COAST GAUGE D-BEACON  
 VERTICAL CONTROL:  
 BENCHMARK: 180 1366  
 PID: HT0702  
 MLLW = 3.972m(13.03ft)  
 NOAA STATION 9414290  
 TIDE GAUGE LOCATION: SAN FRANCISCO

**US Army Corps of Engineers**  
 San Francisco District  
 1455 Market Street  
 San Francisco, CA 94103

**DISCLAIMER:** The United States Government furnishes this information as a public service. It is not to be construed as an endorsement, approval, or implied warranty of the accuracy, completeness, or reliability of the information. The user assumes all liability for any use of this information. The user is responsible for the results of any application of the data for other than the intended purpose.  
 Distribution Liability: The data represents the results of data collected by the Corps of Engineers. The Corps of Engineers makes no warranty, expressed or implied, concerning the accuracy, completeness, or reliability of the information. The user assumes all liability for any use of this information. The user is responsible for the results of any application of the data for other than the intended purpose.

Chart Date: Jun 08, 2020

Surveyed By: JOHN D. CUNNINGHAM	Plotted By: PDT	Designed By: PDT	Drawn By: PDT
Submitt: Hydro Survey Team Leader	Checked By: PDT	Approved: Chief, Hydro Survey Section	Approved: Chief, Construction Branch

CALIFORNIA  
**ALCATRAZ DISPOSAL SITE-SF11**  
 CONDITION SURVEY  
 02 JUNE 2020  
 SAN PABLO BAY  
**Sheet Reference Number 1 of 1**